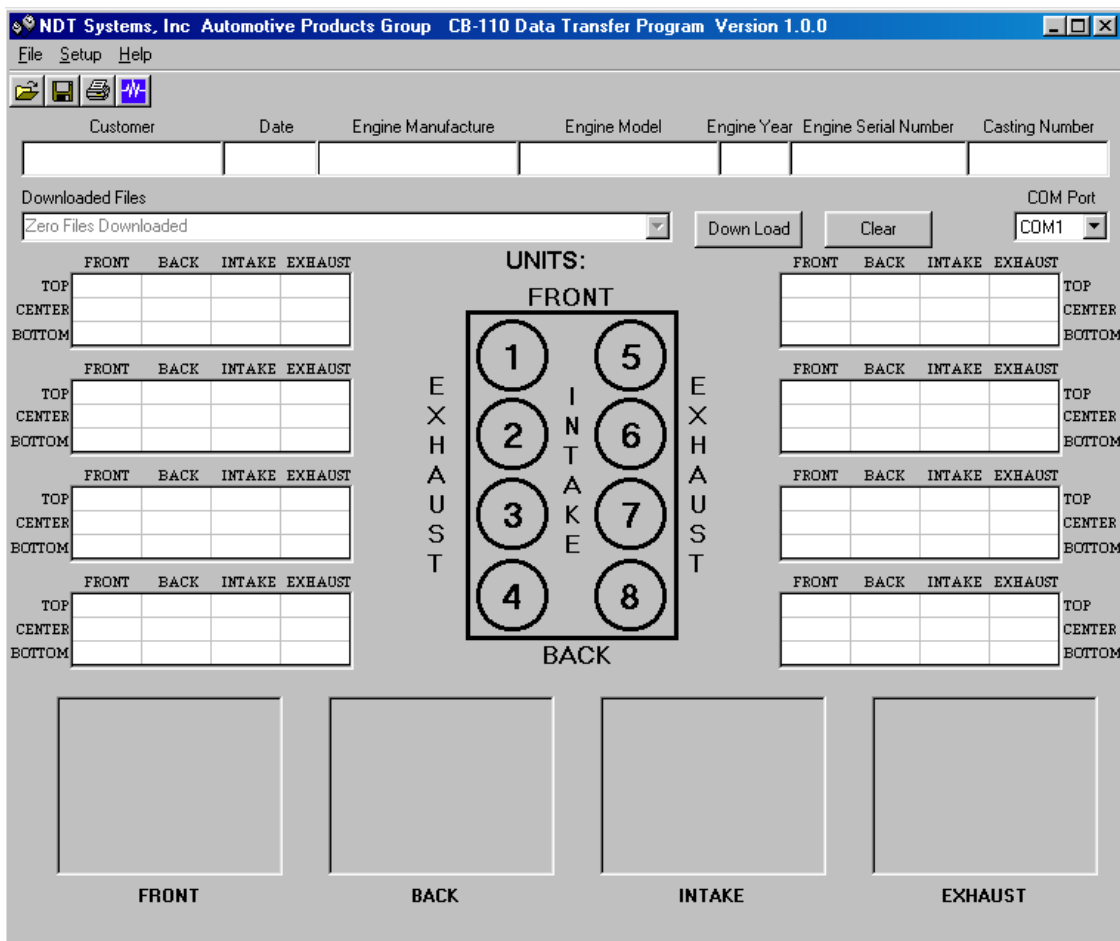


# CB110-DTPW

## USERS MANUAL

### Version 1.0.1

## CB110 Data Transfer Program for Windows



**NDT Systems, Inc.**  
**Automotive Products Group**  
 5542 Buckingham Dr.  
 Huntington Beach, Ca 92649  
 Ph. 714-893-2438 Fax. 714-897-3840  
[www.ndtsystems.com](http://www.ndtsystems.com)

# Table Of Contents

- 1.0 Introduction**
- 2.0 Installing CB110-DTPW**
  - 2.0.1 Installation from CD**
- 3.0 Running CB110-DTPW**
- 4.0 Getting Started**
  - 4.0.1 Settings**
  - 4.0.2 Specifications**
- 5.0 Transferring Data**
  - 5.0.1 Down Loading Log Files From Your Gage**
- 6.0 Working With The Data**
  - 6.0.1 Displaying Side Scans (Engine View Only)**
  - 6.0.2 Clearing Data**
  - 6.0.3 Saving Your Readings to a File**
  - 6.0.4 Opening a File you have Saved**
  - 6.0.5 Printing a Report**
  - 6.0.6 Importing Data into a Spread Sheet Program**
- 7.0 System Requirements & Contact Information**
  - 7.0.1 Hardware**
  - 7.0.2 Contact Information**

**Licensing Agreement**

## 1.0 INTRODUCTION

**CB110-DTPW** is designed to provide a simple means of transferring data from NDT Systems' CB110 series gages to a PC running a Microsoft Windows operating system.

**CB110-DTPW** will allow you to transfer data from CB110 gages in order to print and save reports. This program will not delete files from your gage.

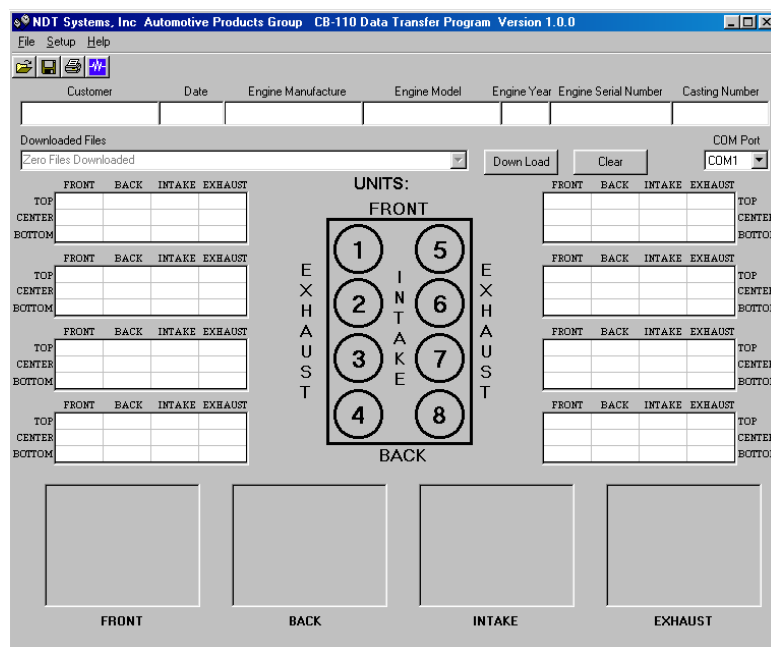
## 2.0 INSTALLING CB110-DTPW

### **2.0.1 CD**

**CB110-DTPW** is installed by simply placing the disk into your CD drive. Autorun should bring up installation of the application and drivers automatically. If autorun is disabled, you will need to manually initiate setup. From the Start menu choose Run. Then from your CD drive, run the file named install.bat (i.e. "D:\install.bat"). Please consult the USB Setup manual for additional information about the USB Drivers.

## 3.0 RUNNING CB110-DTPW

**CB110-DTPW** is run by choosing Programs from the Start menu, then choosing CB110 Data Transfer Program from your program list. The Program name is CB110-dtpw.exe



## 4.0 GETTING STARTED

#### **4.0.1 Settings and Setup**

These fields are used to setup the communications between the computer and the Nova gage and to customize the reports that are generated.

##### *COM Port:*

Using the drop down box, select the COM port that was assigned after plugging in your USB cable.

##### *Company Setup:*

Enter your company information into the corresponding fields as you want them to appear in your printed reports.

#### **4.0.2 Specifications**

These fields may be used to store valuable data about your test setup.

##### *Customer:*

This field contains the name of your Customer.

##### *Date:*

You may use this field to record the date of your inspection.

##### *Engine Manufacture:*

You may use this field to record the manufacture of the engine being inspected.

##### *Engine Model:*

You may use this field to record the model of the engine being inspected.

##### *Engine Year:*

You may use this field to record the year of the engine being inspected.

##### *Engine Serial Number:*

You may use this field to record the serial number of the engine being inspected.

##### *Casting Number:*

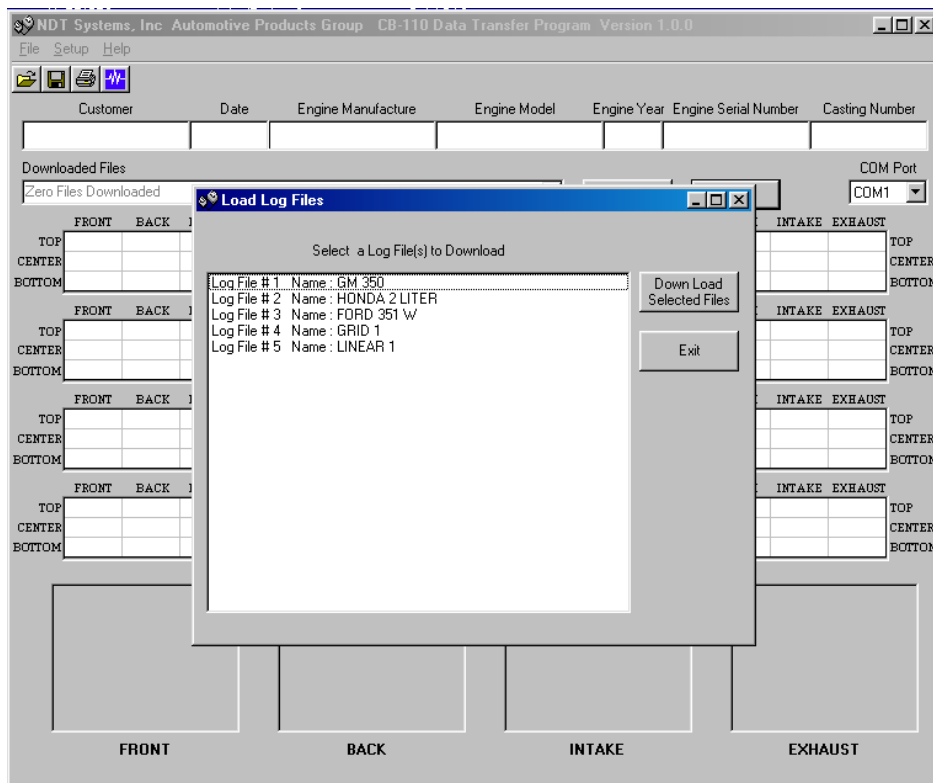
You may use this field to record the casting number of the engine being inspected.

## 5.0 TRANSFERING DATA

With the proper Settings selected as stated in section 4.0, you are ready to begin. Attach the download cable between your computers USB port and your CB110 gage. Turn the CB110 gage on.

### 5.0.1 Downloading Log Files From the CB-110

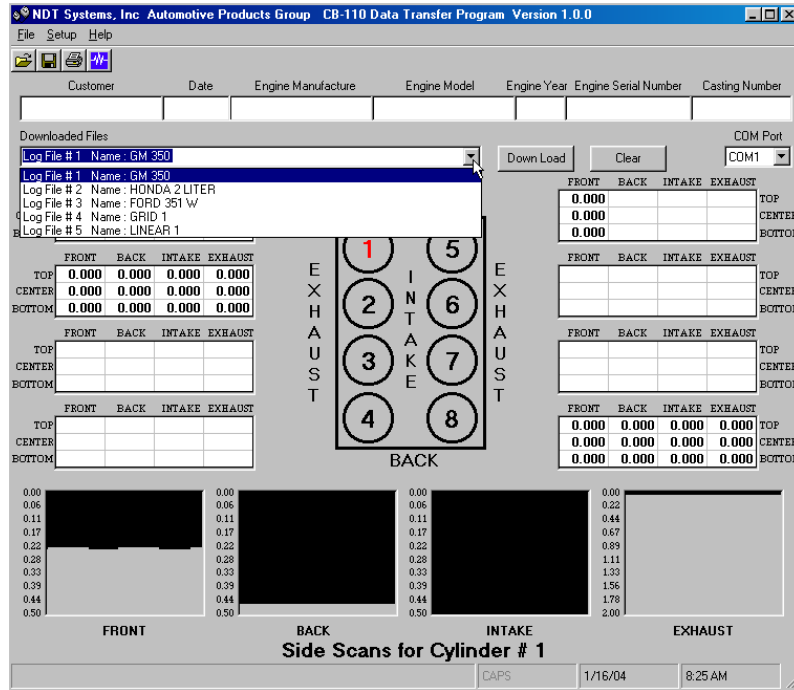
To begin, click the Down Load Log File List button. You will see a box pop up with a list of all the Log Files on your gage.



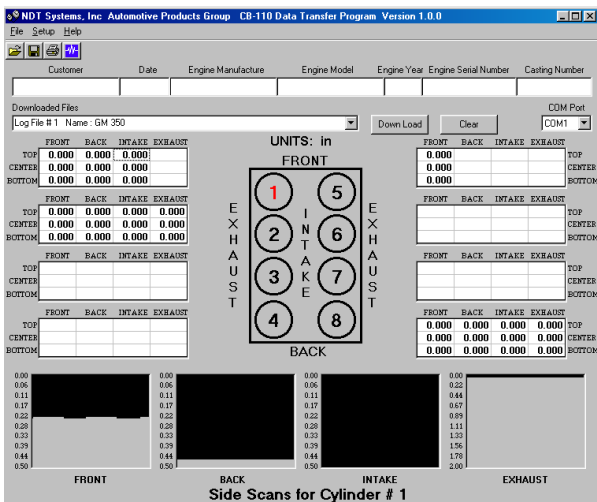
Select the Log Files you would like to down load to your computer. To do this, highlight with your mouse the items in the box you want to select. You may select multiple lines by holding down your left mouse button and moving your mouse over all of the items you want to select. You may also hold down the Ctrl key on your keyboard while clicking the items to select. This allows you to choose individual lines to select.

Click the Down Load Selected Files button to begin loading the files. Click Exit to exit with out downloading any files. **NOTE:** *Downloading files from your gage will overwrite any files you may have currently displayed on your PC, if you have not all ready saved them to your hard drive.*

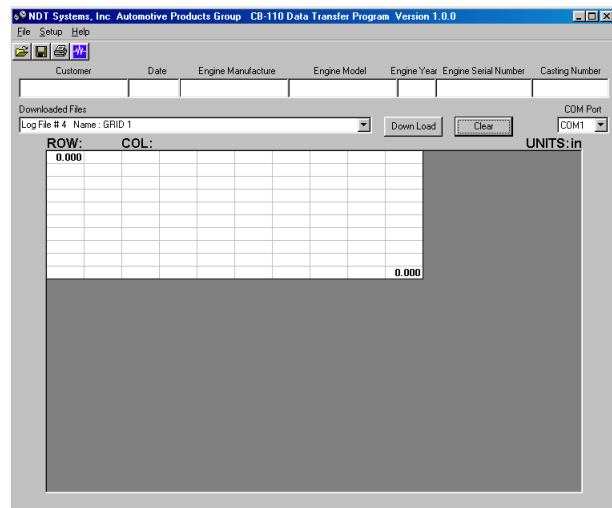
After downloading your Log Files, you can view them by choosing the one you would like to view from the list labeled Downloaded Files.



There are three different types of log files that you can download from your CB-110. The three types are Engine, Grid, and Linear. Depending on which type of file you created you will see one of the two screens shown below. One type for Engine, one type for Grid and Linear.



Engine View



Grid & Linear View

## 6.0 WORKING WITH THE DATA

### 6.0.1 Displaying Side Scans (Engine View Only)

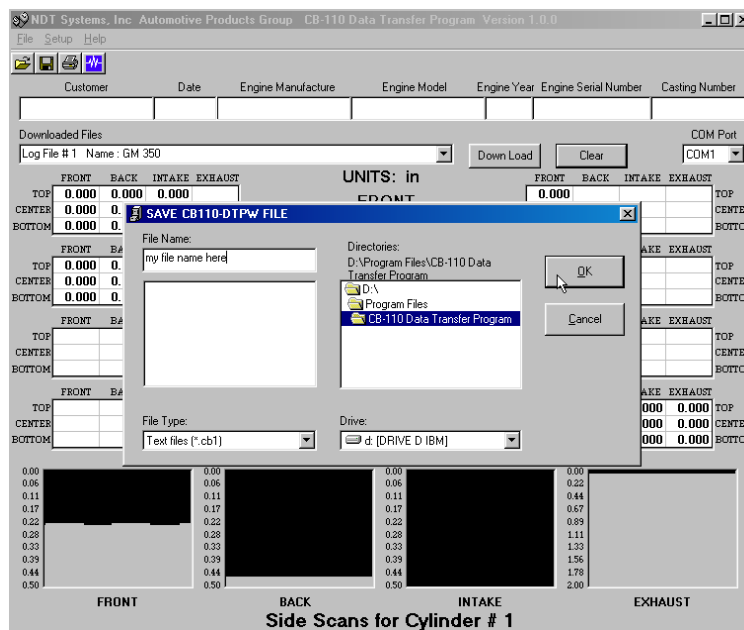
Each one of the 8 grids corresponds to the 8 cylinders labeled on the screen. By clicking on any one of the 8 grids, the side scans associated with that cylinder are displayed in the four windows at the lower portion of the screen.

### 6.0.2 Clearing All Data

To clear out or delete all of the current data, click the Clear button. This will clear out all of the readings as well as the information in the Specifications area.

### 6.0.3 Saving Your Readings to a File

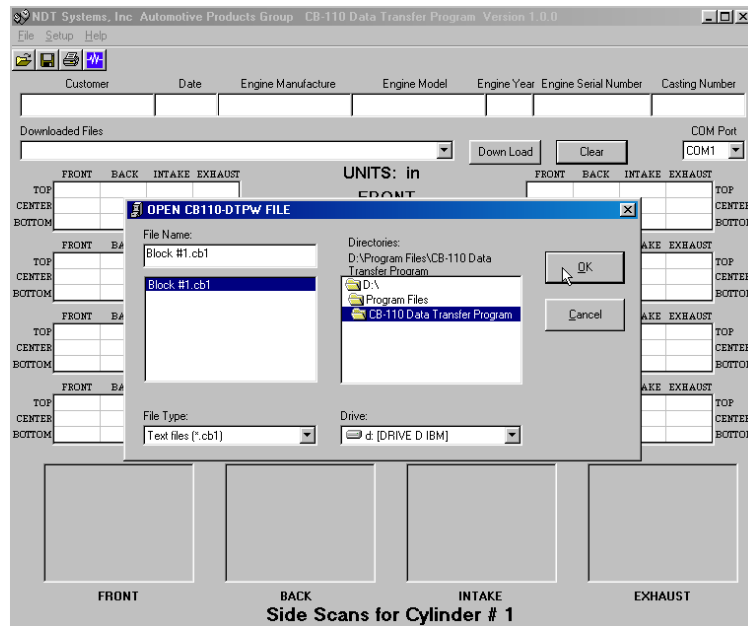
To save your readings and Specifications information to disk, simply click on the floppy disk icon or click File, then Save as. The default location to save your files is under your CB-110 Data Transfer Program directory. To select another location, simply choose the drive and path by clicking on the ones you want. Enter the filename you wish to use and then click OK. **NOTE:** this saves the data *currently* displayed in the grid and specifications **ONLY**. If you have downloaded multiple Log Files you will need to select each one you want to save from your Downloaded Log Files list and save each one. To exit with out saving, click Cancel.



### 6.0.4 Opening a File you have Saved

To open a file you have saved, simply click on the open file icon or click File, then Open. The default location to open your files from is under your CB110 Data Transfer Program directory. To select another location, simply choose the drive

and path by clicking on the ones you want. Click on the filename you want to load or enter the file name and click OK. To exit without opening, click cancel.

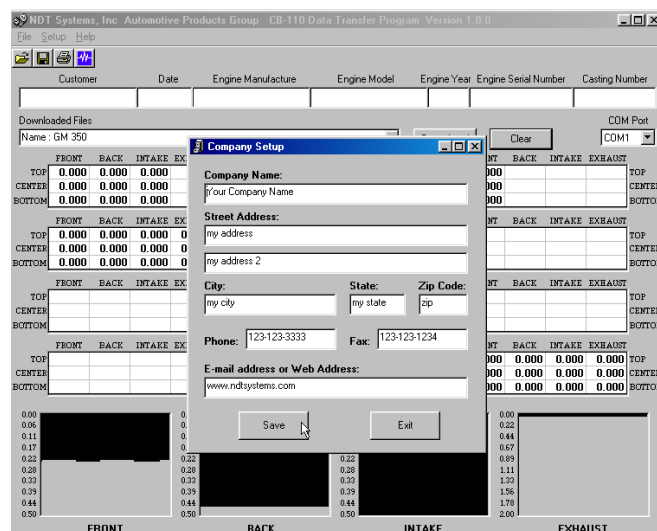


**NOTE:** Loading files from your hard drive will overwrite any files you may have currently displayed on your PC, if you have not all ready saved them to your hard drive.

### 6.0.6 Printing a Report

The Print feature allows you to print a report on your printer containing all of your readings and specifications. The report will print on any of your Windows printers. A custom header can also be printed with all of your company contact information.

To setup and save your company information, click Settings on the menu bar then click Company Setup. Then enter the information you would like to be printed on the header of your report. Any field left empty will not be printed. To save your entries, click Save. To exit with out saving, click exit.





To print your report using your default Windows printer, simply click the Printer icon on the tool bar. To be able to choose your printer, number of copies, and set printer properties click File on the menu bar, then Print. Next select the settings you prefer. Click OK to print, or cancel to exit. If there have not been any log files downloaded, or loaded from your hard drive, a report will not print.

## **7.0 SYSTEM REQUIREMENTS & CONTACT INFORMATION**

### **7.0.1 Hardware:**

Pentium 4 Processor  
256 MB RAM (1024 or greater recommended)  
1024x768 minimum screen size  
One available USB Port  
100 MB Disk Space

### **7.0.2 Contact Information:**

NDT Systems, Inc.  
5542 Buckingham Dr.  
Huntington Beach, CA 92649



To see the latest products and services from **NDT Systems, Inc.**, log on to [www.NDTSystems.com](http://www.NDTSystems.com) or simply click on the **NDT Systems, Inc.** logo and your default web browser will be launched and take you to our website.

- Microsoft Windows is a registered trademark of the Microsoft Corporation

# Licensing Agreement

Please read carefully the following terms and conditions.

This agreement is made between the Purchaser, (hereinafter USER), and NDT Systems, Inc. (hereinafter NDT) for the licensing of CB-110-DTPW. CB-110-DTPW has only commercial use and the terms of this agreement including the disclaimers and limitations are expressly part of the bargain on which the license to use CB-110-DTPW is granted. Use of CB-110-DTPW indicates the USER'S acceptance of the terms and conditions of this licensing agreement.

## I. License

- a) Specifications: CB-110-DTPW substantially conforms to and performs in accordance with the specifications and written documentation provided with CB-110-DTPW.
- b) License Rights: This Licensing Agreement grants to USER a nonexclusive, nontransferable right to use this software.
- c) Restrictions: The software relating to CB-110-DTPW is copyrighted under the laws of the United States with copyright registration pending. Title to CB-110-DTPW and all variations rests with NDT. USER may not rent or lease CB-110-DTPW without written consent of NDT. At the end of the term of this license, USER shall destroy all archival copies. User shall not reverse engineer, decompile or disassemble the software.
- d) Trade Secret: NDT claims the Source Code to CB-110-DTPW and all variations thereof as a trade secret. User, it's employees, agents and assigns are obligated to maintain the secrecy of that source code.

## II. Warranties and Limitations

- a) Hardware: This software is designed to be used only with IBM compatible computers using Windows operating systems. NDT is not responsible for damage, injury to persons or equipment or monetary loss resulting from use of this software with any other equipment.
- b) NDT warrants this software will substantially conform to and perform in accordance with the accompanying specifications and other documentation. NDT further warrants the disk on which program is recorded to be free from defects in materials and workmanship under normal and recommended use and serviced for 120 days from delivery and will replace any disk which is defective during that period.
- c) Disclaimer: As part of the bargain in entering into this Licensing Agreement NDT expressly disclaims and otherwise denies all other warranties not expressly set forth in this Agreement, express or implied, including but not limited to warranties or merchantability and fitness for a specified purpose.
- d) Limitation of Damages: As part of the bargain in entering into this agreement, NDT will not be liable for any consequential, incidental or special damages arising out of or in any way related to use of CB-110-DTPW. Consequential, incidental and special damages include, but are not limited to, loss of profits, loss of business or other pecuniary loss.
- e) Greatest rights: In the event that the disclaimer and limitation remedies clauses of this agreement are unenforceable in any legal jurisdiction, NDT shall have right to the most comprehensive disclaimers and limitation clauses permitted in that jurisdiction.
- f) Indemnification: In the event that a claim is made against NDT due to USER's use of this software, USER agrees to indemnify NDT for all loss including actual attorney fees.

## III Updates and Enhancements

NDT has the sole right to determine under what conditions it will provide updates and enhancements of the software for tg-110-DTPW. USER shall receive such updates and enhancements on the same terms and conditions governing all other users of any such variation of CB-110-DTPW.

## IV Miscellaneous

- a) These written terms and conditions embody the entire agreement between the parties. No additional oral or written representations have been made.
- b) If any part or term of this contract is held by any court of law to be invalid, the remaining provisions shall not be affected and the rights and duties of the parties shall be construed as though the contract did not contain the invalid clause
- c) This contract shall be governed by the laws of California.
- d) This agreement shall not be assigned or sublicensed or otherwise transferred by USER in whole or in part without the prior written consent of NDT.
- e) Except as expressed in this agreement, no term or provision of this agreement shall be deemed waived by either party, and no breach excused in this agreement, no term or provision of this agreement shall be deemed waived by either party, and no breach excused unless done so by the non-breaching party in writing. No consent to or waiver of, a breach by either party whether express or implied, shall constitute a consent to, waiver of, or excuse for, any other different or subsequent breach by any party.
- f) This agreement may not be modified, changed, released, discharged, abandoned, or otherwise amended, in whole or in part, except by an instrument in writing signed by the party to be affected by such modification.

# USB Setup Addendum



5542 Buckingham Dr. • Huntington Beach CA 92649  
(714) 893-2438 • FAX: (714) 897-3840

## Table of Contents

<b>1. Introduction.....</b>	<b>2</b>
<b>2. WIN98/SE© Compatibility.....</b>	<b>3</b>
<b>3. Windows XP© Setup .....</b>	<b>4</b>
3.1 Setup.....	4
3.2 Changing Port Number.....	13
<b>4. Windows Vista/7 © Setup.....</b>	<b>16</b>

## **Introduction**

The NDT Systems USB interface is setup to identify different products while using the same USB controller. This means that only one driver installation package is needed for our full line of products.

The automated installation process minimizes the user interaction required, but may not be allowed to function fully, depending on the security settings in place and user account privileges granted. If the installation does not take place automatically upon insertion of the disk, the following sections will guide you through running the installation manually.

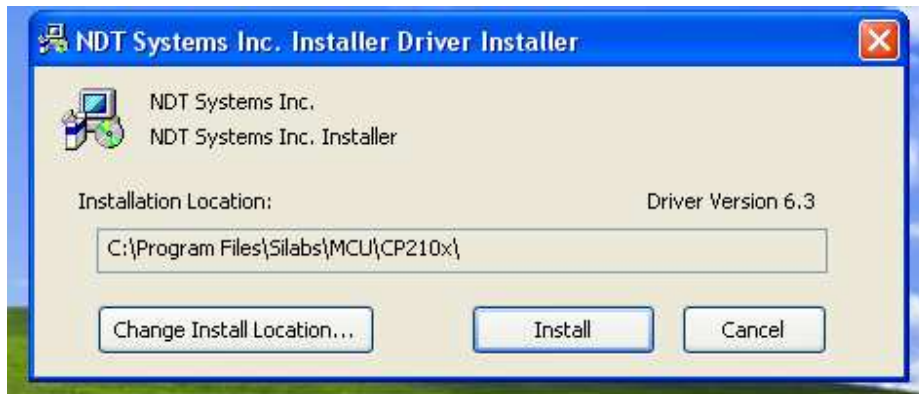
**WIN98/SE© Compatibility**

Windows 98 and 2000 are no longer supported by the drivers included on your CD. However, if you require the application to run on these platforms, email [info@ndt-systems.com](mailto:info@ndt-systems.com) for help acquiring a legacy version of our software.

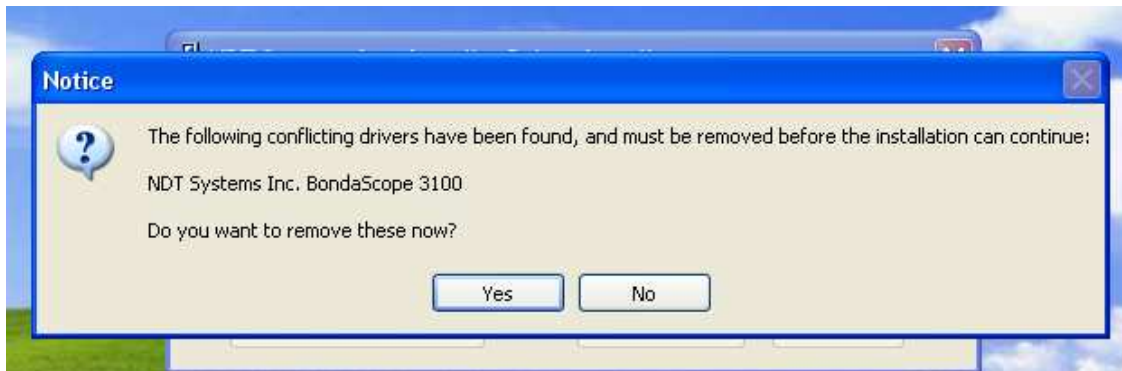
## **Windows XP® Setup**

### ***Automatic Setup***

After inserting your CD, AutoRun should bring up the driver installation wizard automatically. If AutoRun is disabled, you will need to browse to the folder “USB Drivers” on the CD (i.e. D:\USB Drivers), and run NDTCP210xVCPInstaller.exe.



The dialog above will appear. Click Install to continue.



If any previous versions of NDT Systems, Inc. drivers are on the computer, the above dialog will appear. Click Yes for the removal and installation to proceed. (Keep in mind that if you update drivers for other products without obtaining the corresponding updates to the respective DTPW applications, the legacy applications may not work with the new drivers.)

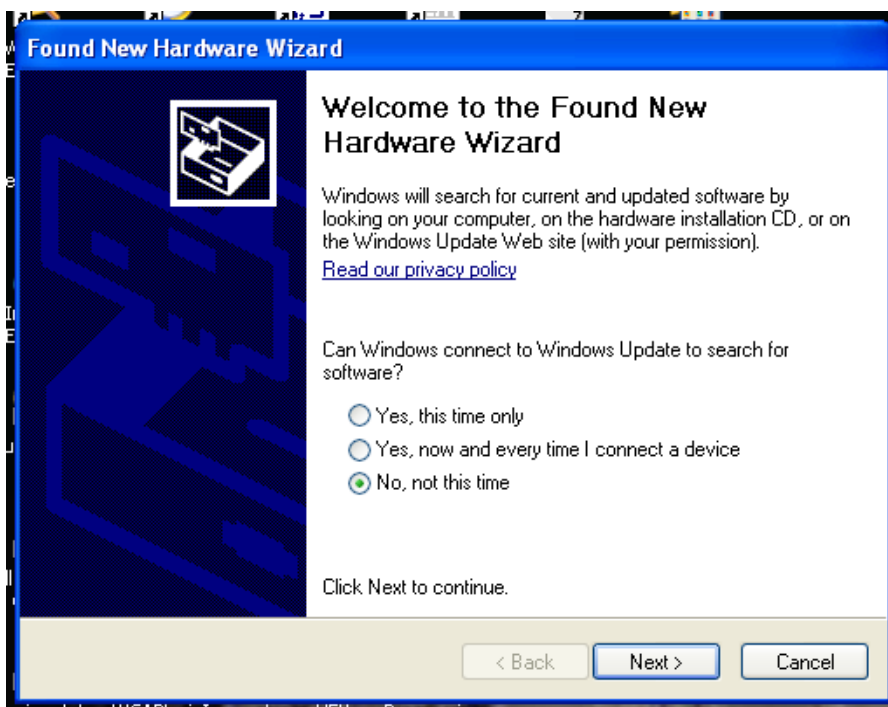
Once the installation is complete, you can plug in your gage and Windows XP will complete the background installation of the drivers specific to your gage. If Windows reports a problem with installation, continue on the Manual Setup to address driver issues.



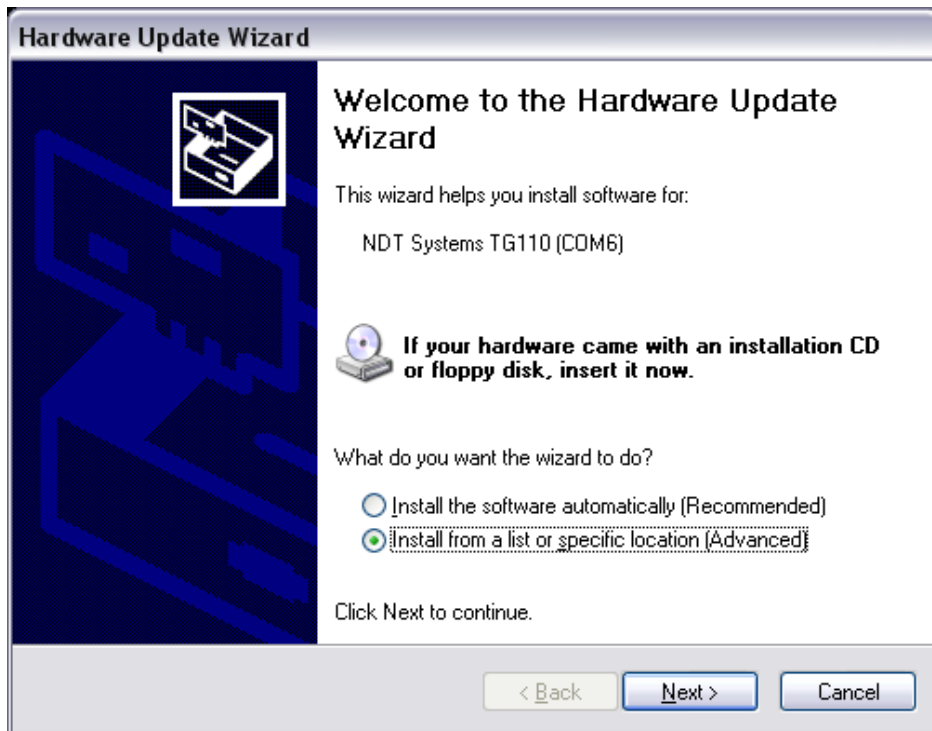
## Manual Setup

If the instrument was to be connected to the USB first (before running the setup on the CD), then the **Found New Hardware** wizard will take you through loading the drivers, Step by Step.

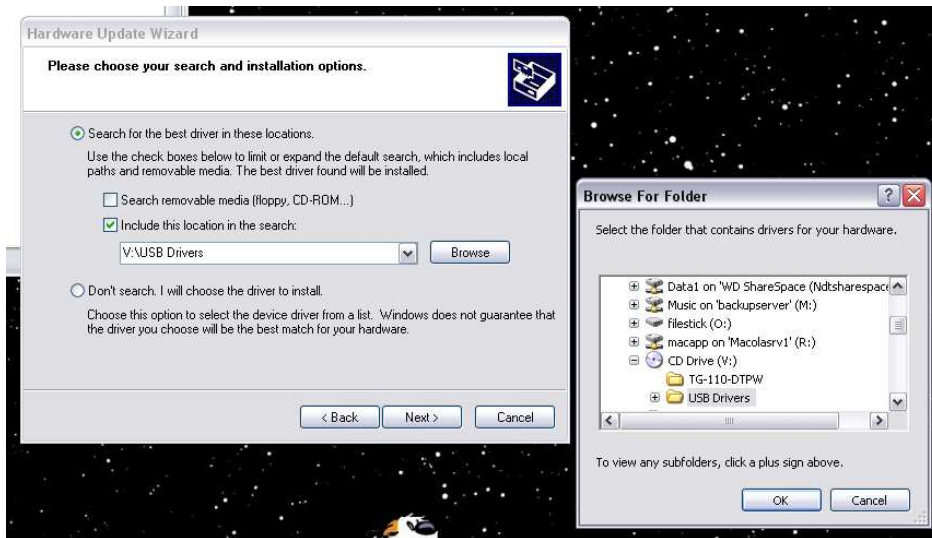
When you connect your NDT Systems instrument it will bring up the Found New Hardware wizard. If not, you will need to bring up the Device Manager. Open Start menu, then choose Run... Type "devmgmt.msc", and then click OK. Look under USB Controllers or under Ports to find your device (it may have a yellow exclamation), then Right-click on it and choose Update Driver...



Do not allow the wizard to search for your files. Select No, not this time.

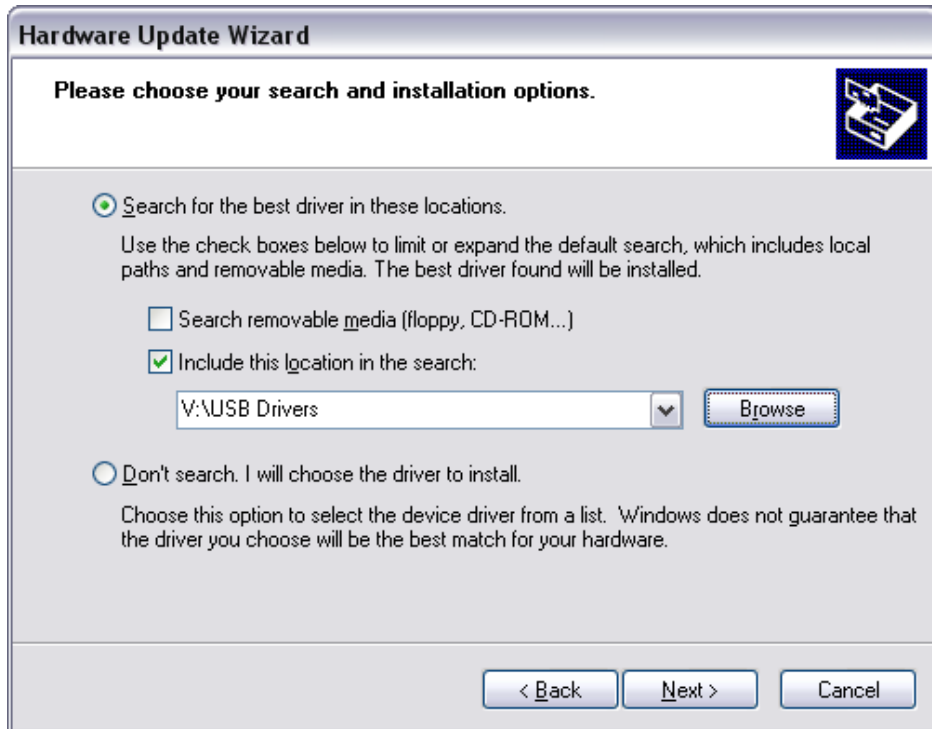


At the next screen you want to select Install from a list or specific location.

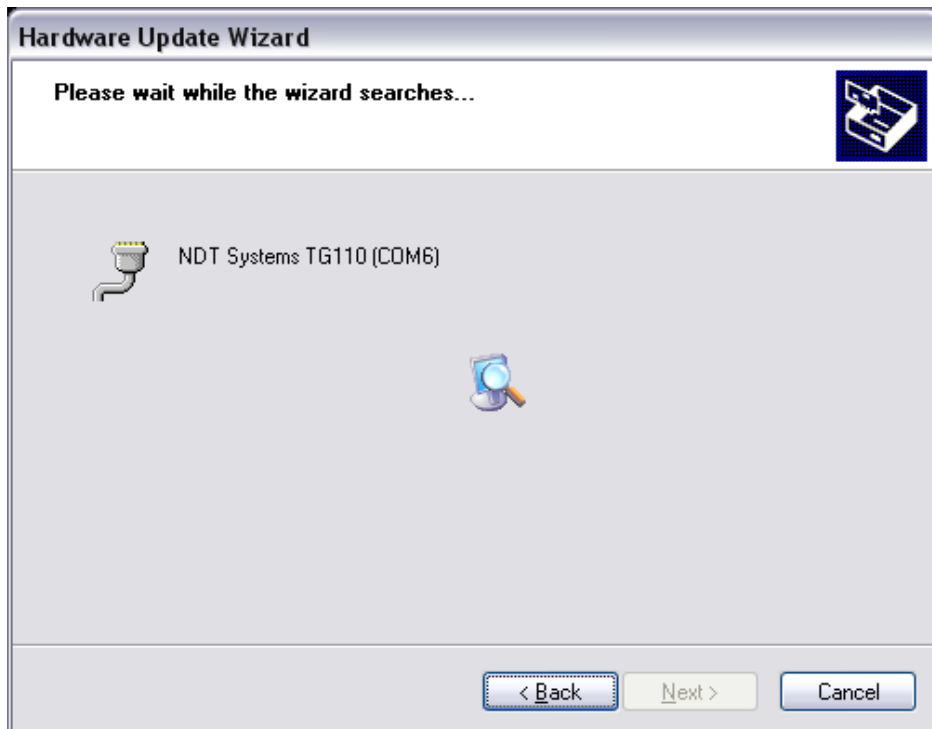


Select include this location in the search. Then click the browse button.

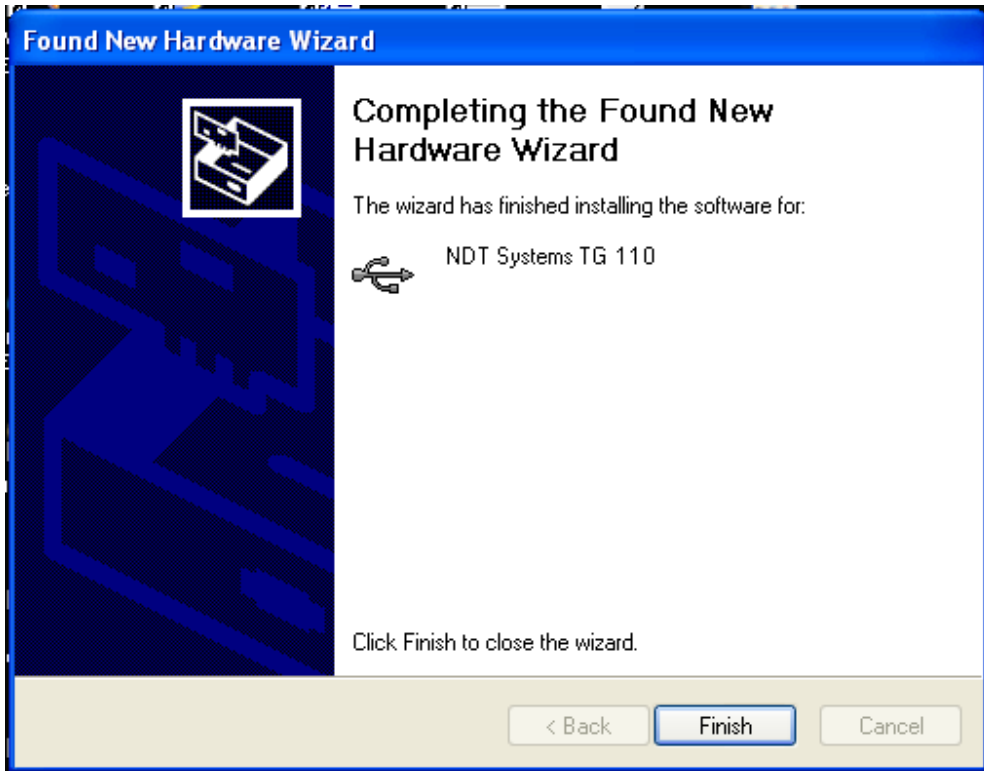
In the browse for folder box select your CD drive that has the driver disc in it. Find the drivers directory and select the USB drivers directory. Click the OK button.



The path to the drivers folder should now be seen to the left of the browse button. If it is correct Click the Next button.



The computer will begin reading in the driver files.



After the wizard finishes the driver installation, it will display this screen. Click the Finish button.



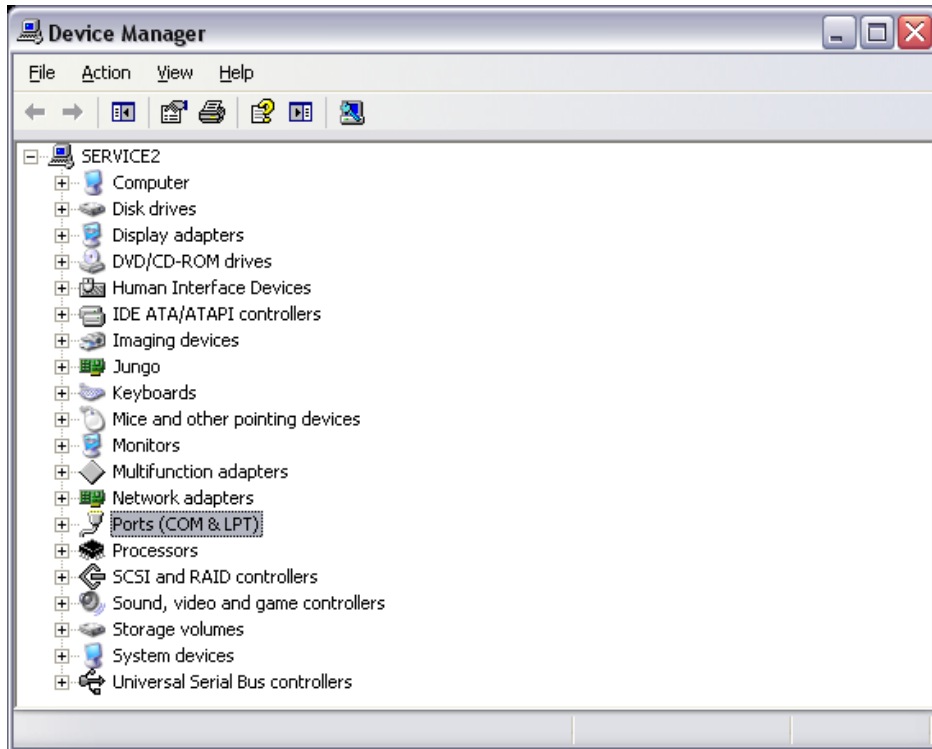
When it has finished the above message will show on the tool bar. To confirm installation and determine the ComPort assignment for your instrument follow the next series of steps.



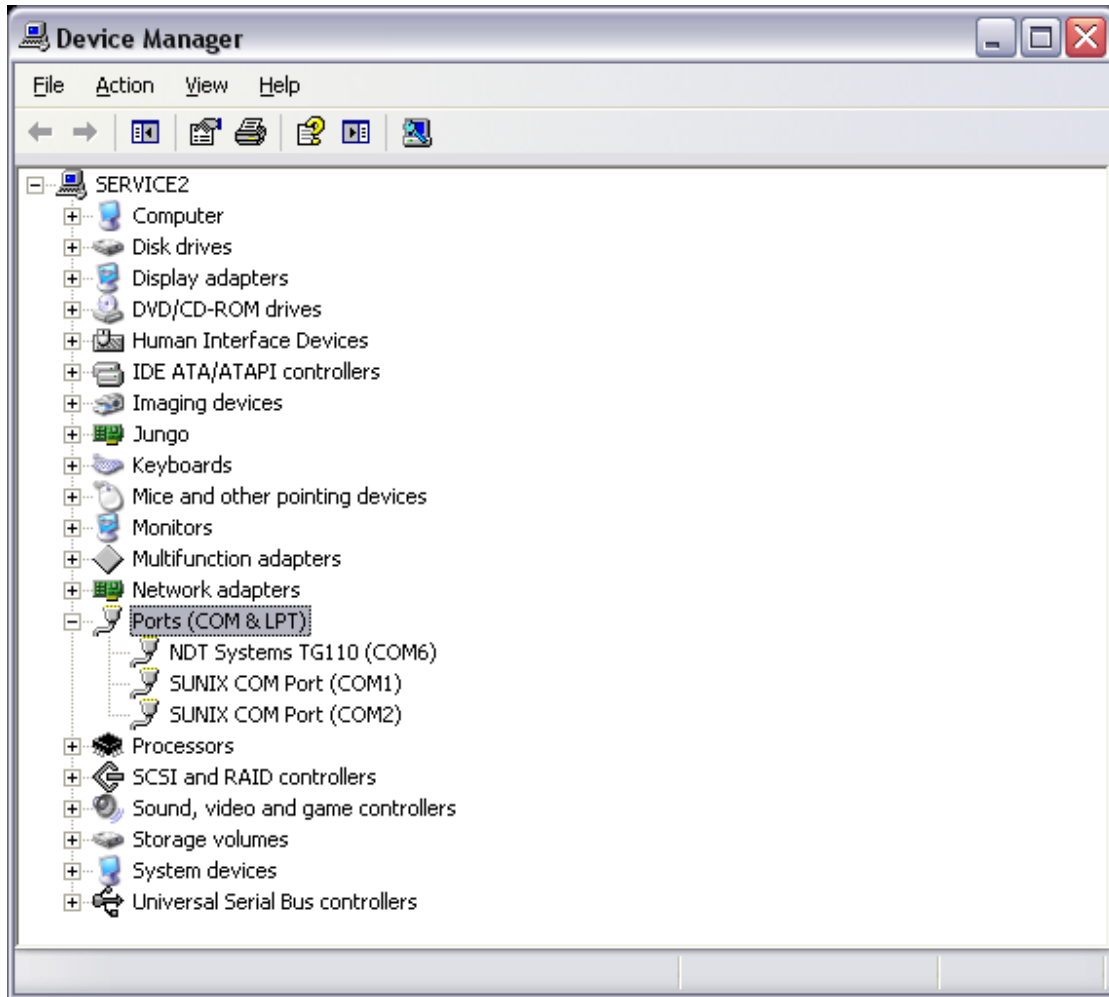
Bring up the Systems Properties dialog by clicking on the System Icon in the Control Panel area. Next select the Hardware tab.



When the hardware tab is up click on the Device Manager button.



The Device Manager lists all the available devices attached to your computer.



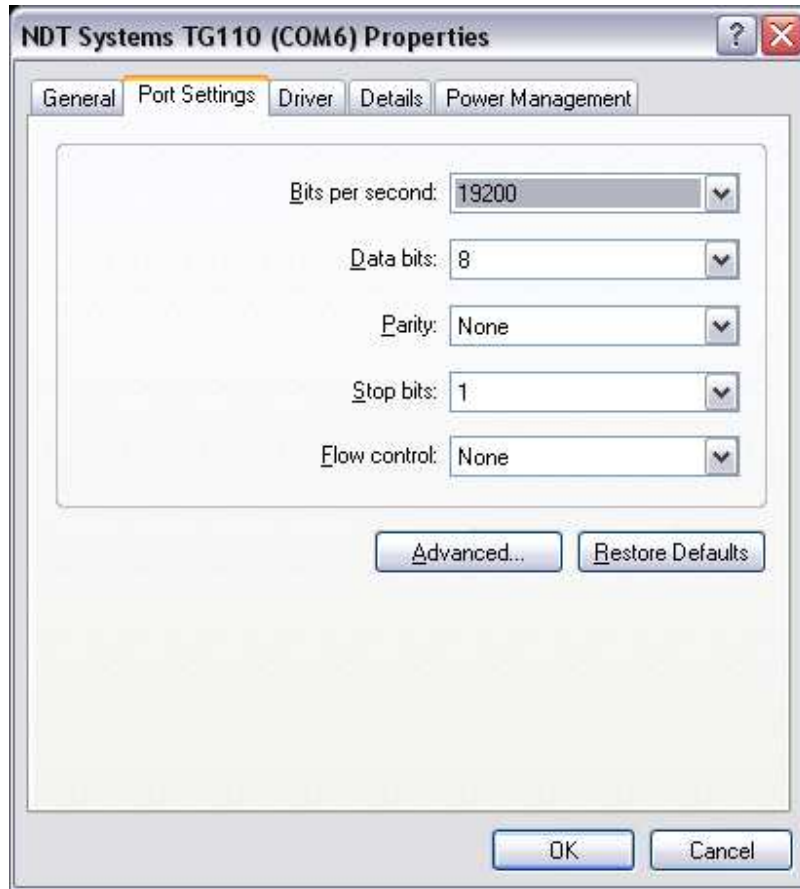
Click the plus symbol next to the listing for Ports (COM & LPT). This will list all the Ports currently recognized on your computer. It also shows which COM or LPT port they are attached to.



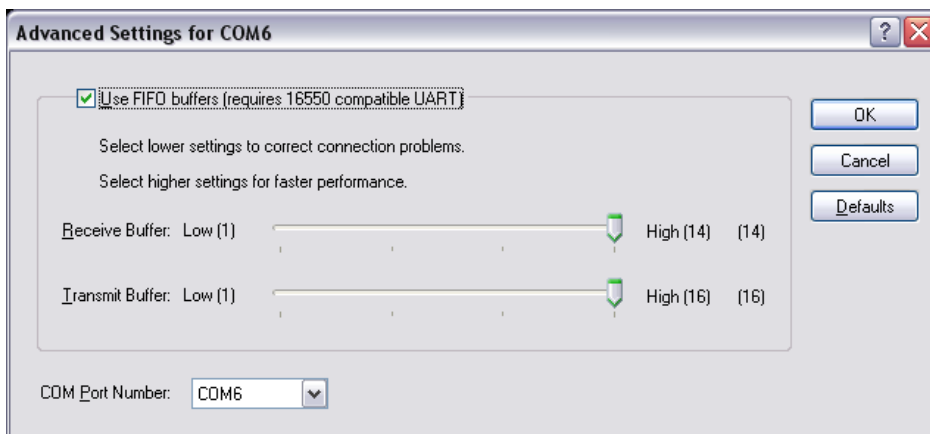
### Changing Port Number



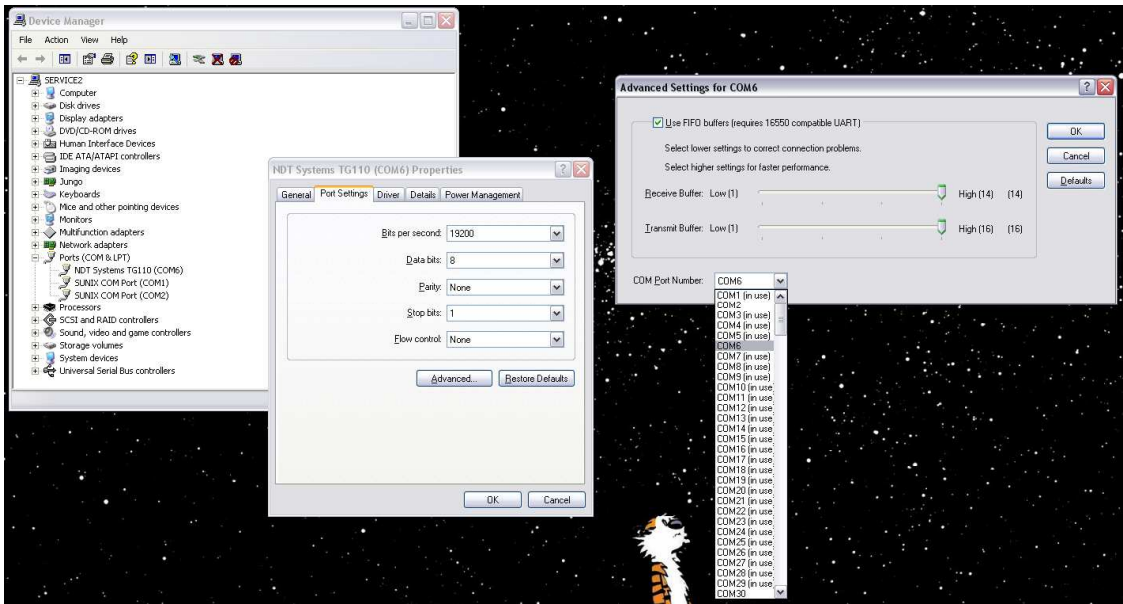
Click on the NDT Systems instrument listing to bring up its properties. If it is necessary to change the COM Port it is assigned to, click on the Port Settings tab.



Click on the Advanced Button.



In the lower left is a box that shows the COM Port click the down arrow to show the available COM Ports.

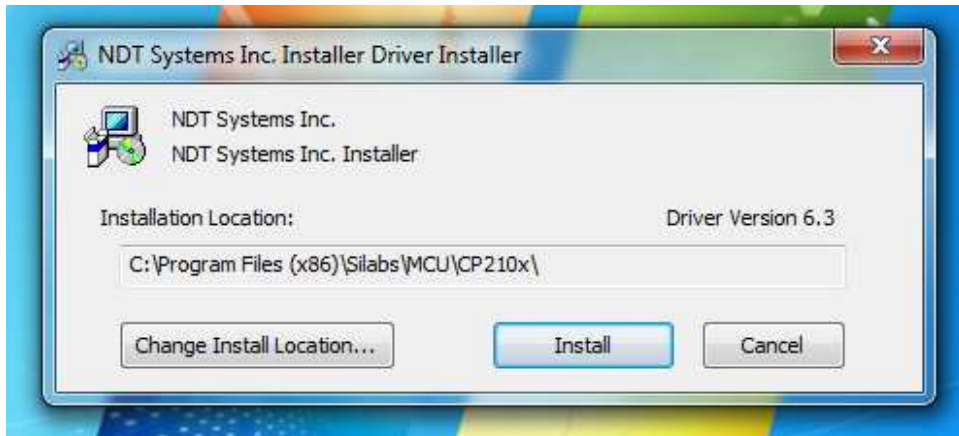


Select an available COM Port in the range of COM1 – COM15. Then click the OK button. Click OK at each level backing out.

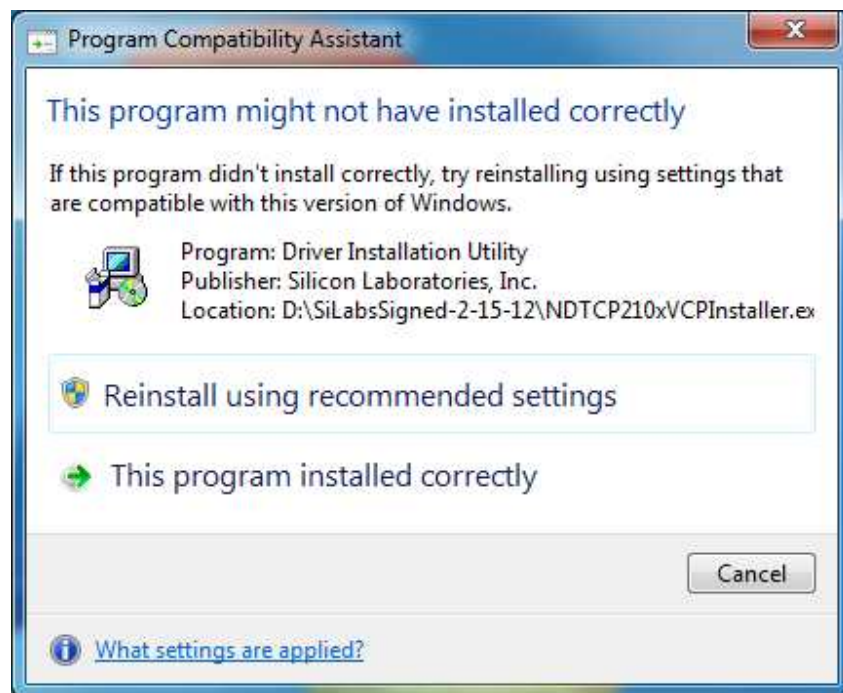
Make sure to note the COM port assignment made as you may need this in the DTPW application.

## **Windows Vista / 7 © Setup**

### ***Automatic Installation***



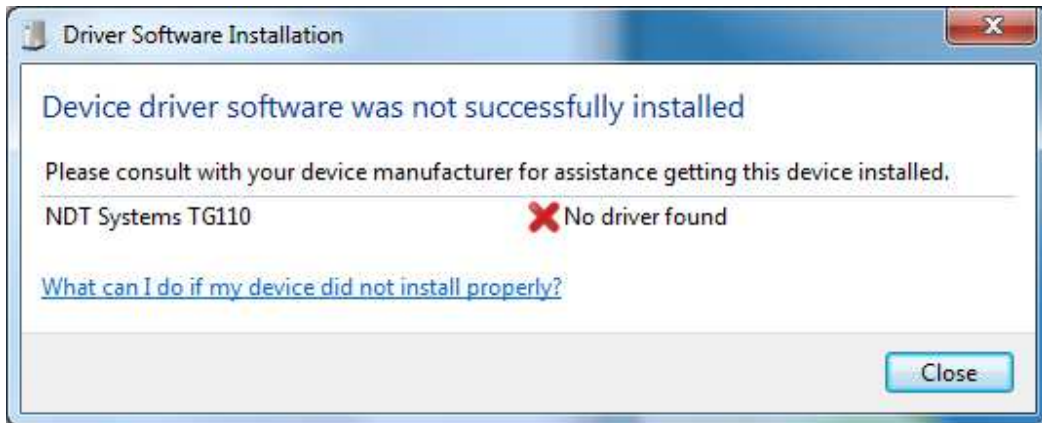
After accepting any UAC prompts, proceed as specified above for Windows XP Automatic Installation. If older versions of drivers are installed, upgrading is necessary to ensure continued functionality.



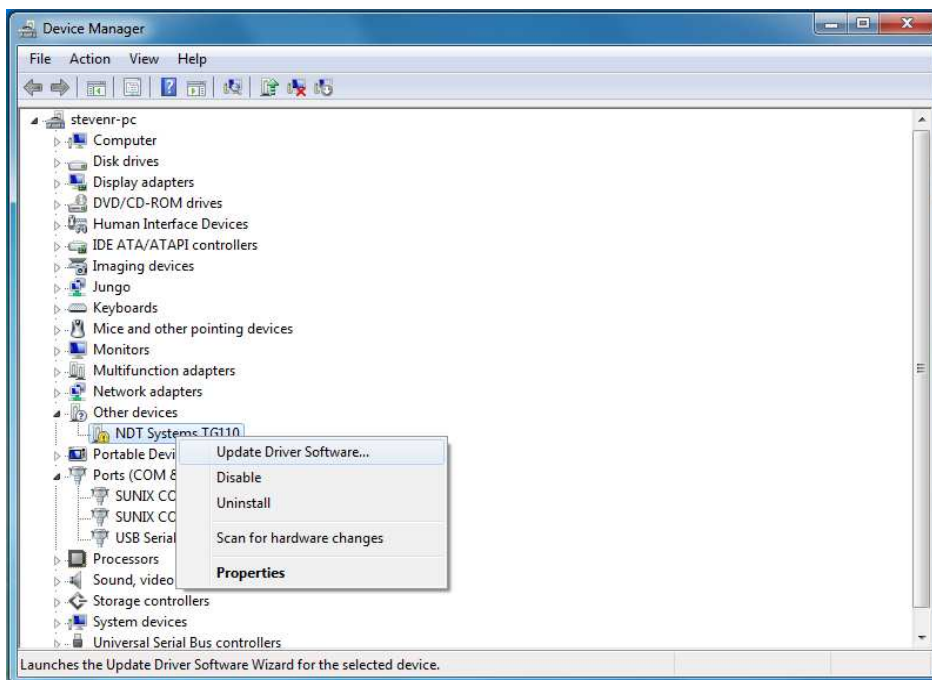
If the above dialog appears after installation, you can safely choose Cancel or close the window.

## Manual Installation

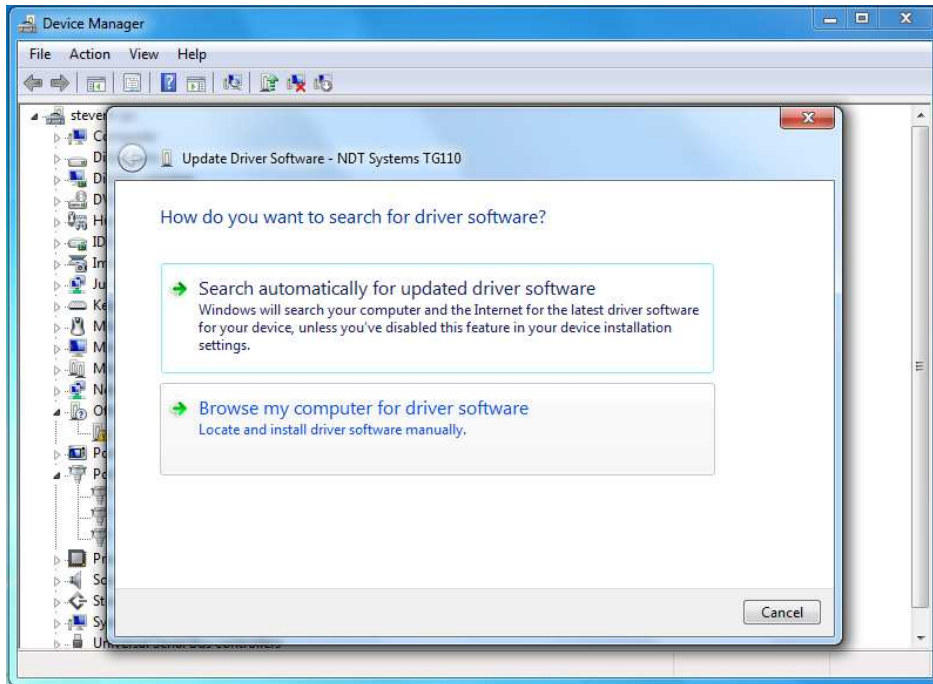
If the instrument was to be connected to the USB first (before running the setup on the CD) or older, unsigned drivers were previously installed, then the **Found New Hardware** wizard will take you through loading the drivers, Step by Step.



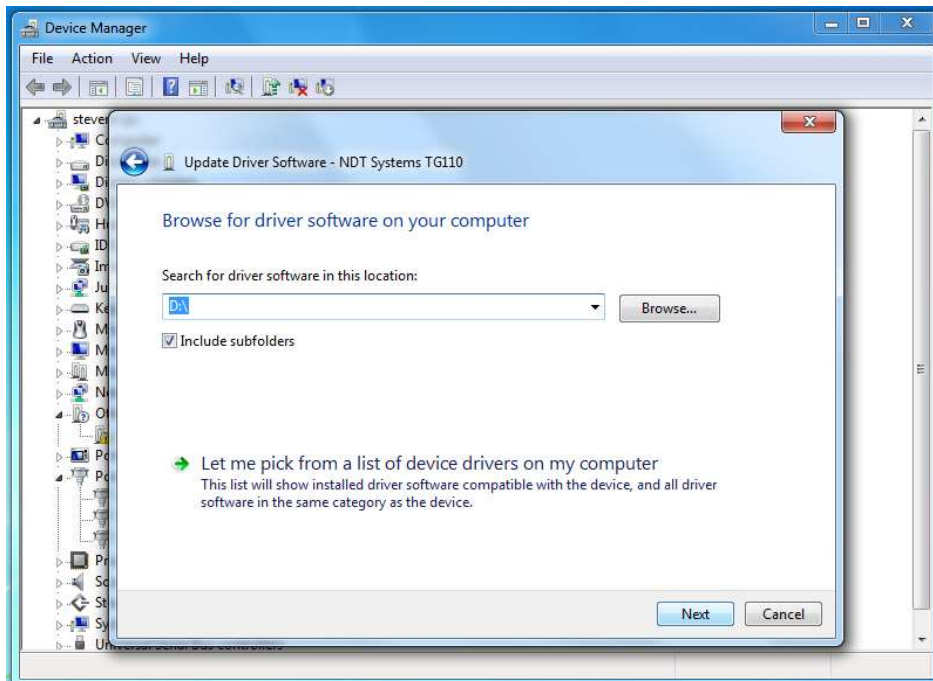
If you see the above dialog, you will need to open the Device Manager to start driver installation. From the Run... prompt, type "devmgmt.msc", then OK.



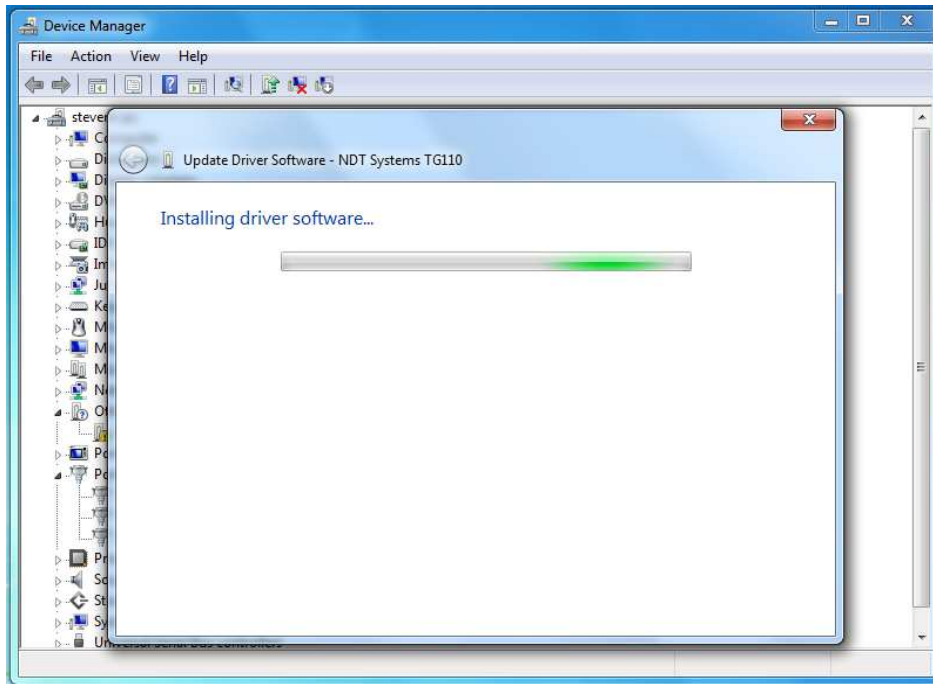
In Device Manager, locate the entry for your instrument (it may have yellow triangle with an exclamation as shown). Right-click on the entry and choose Update Driver Software...



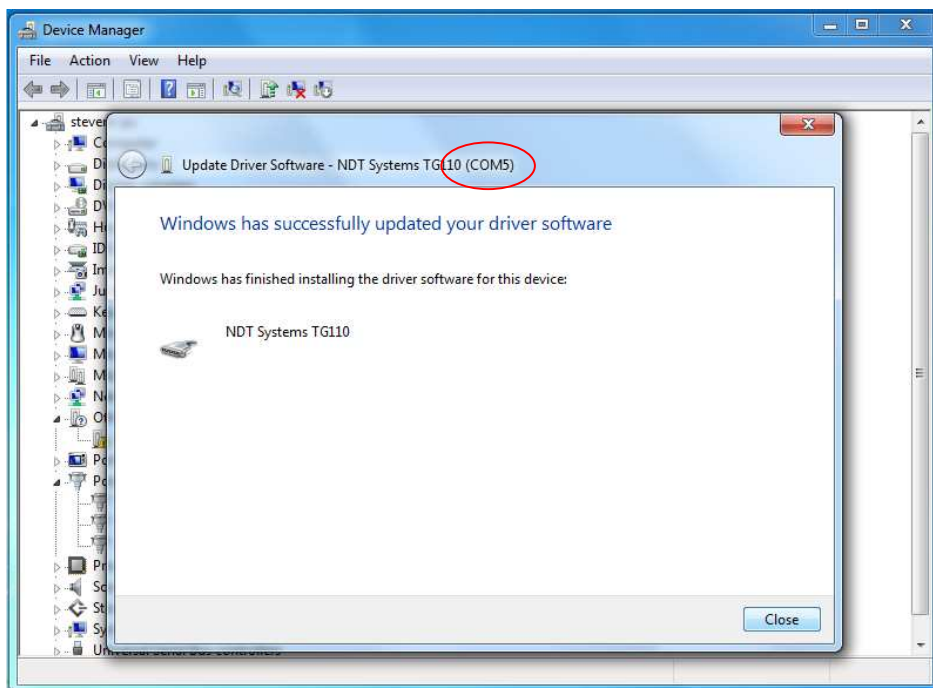
Choose “Browse my computer for driver software”.



Type the drive letter of your CD drive (i.e. D:\) or browse to select it. Make sure “Include subfolders” is checked, then click Next.



Windows should find the drivers on the disk and automatically proceed with installation.



Once installation is complete you can close the window. Take note of the COM port your instrument has been assigned to, as this will be needed in the DTPW application.